



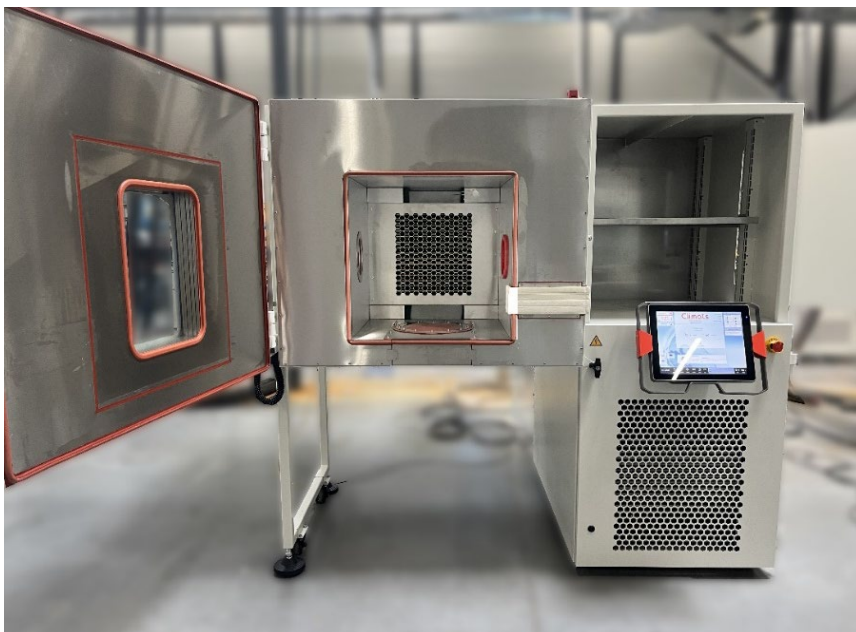
## Environmental test chamber for vibrating pot

CUSTOM SOLUTION, HOT-COLD, 216 dm<sup>3</sup>

This solution is designed to mechanically interface with a vibrating pot and is intended for use by R&D team laboratories and quality and methods departments in industrial sectors such as electronics, mechanics and instrumentation. It enables the efficient testing of various sub-assemblies.

This configuration allows climatic and vibration testing to be carried out simultaneously.

The chamber has been ergonomically designed to interface with a vibrating pot. The wall feedthroughs allow for the quick connection of test specimens. The chamber's design has been optimised for installation in limited spaces. A free area on the right provides space for installing measurement equipment. The chamber is equipped with wheels and rails for optimal mobility.



## Spirale Vision

This chamber benefits from the **Spirale Vision** control offering a high regulation quality.

You would also appreciate the programming and archiving features this control system is known for. Spirale, already established in more than 6,000 environmental test chambers and test benches in the world, is the most intuitive and versatile human-machine interface on the market.

## TECHNICAL FEATURES

### CHARACTERISTICS

- ▶ Free space under the right side of the unit for installing measurement equipment
- ▶ Raised test area on the left side
- ▶ Temperature range:  $-60$  to  $+150$  °C

### DIMENSIONS

Dimensions (mm)	Width	Depth	Height
Useful	600	600	600
Overall	1920	1400	1650

### OPTIONS

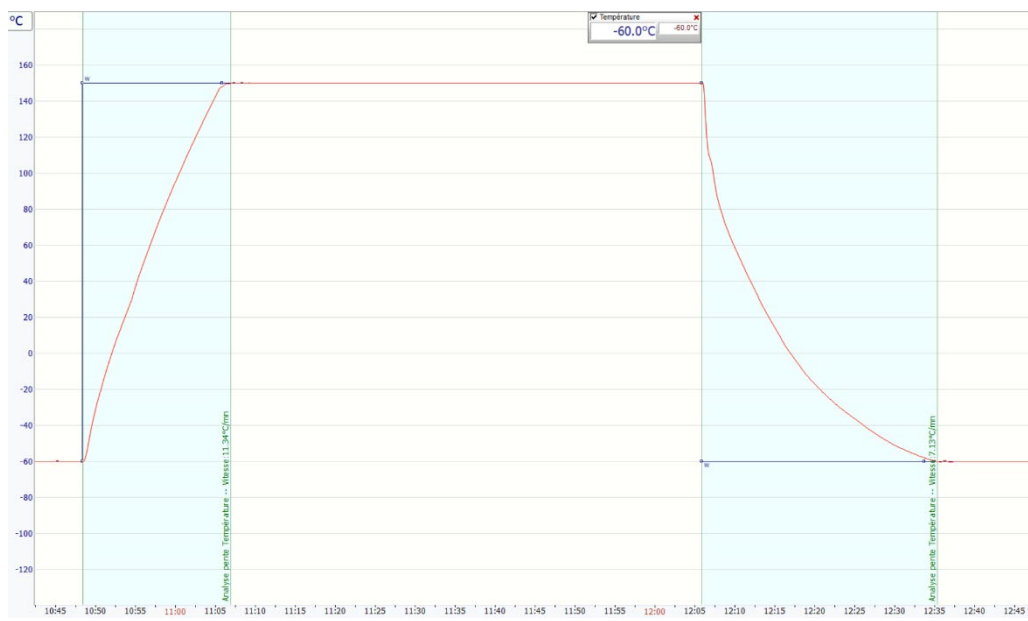
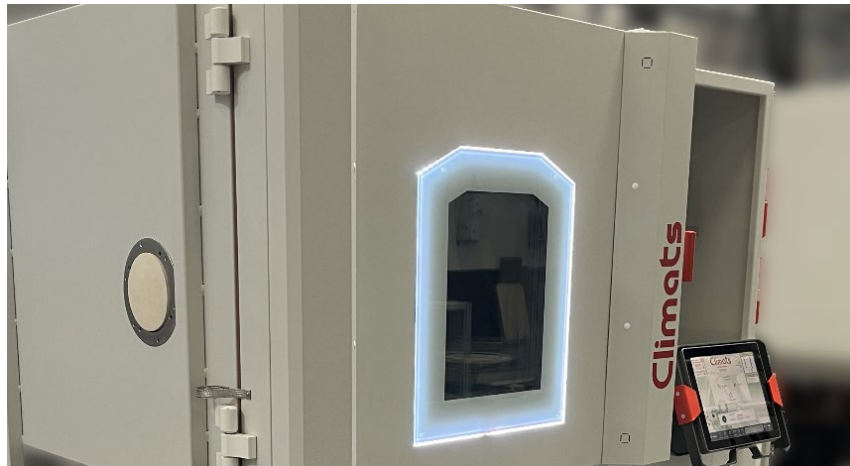
- ▶  $\varnothing 150$  mm porthole on the left side with stainless-steel flange
- ▶ Left-hinged door
- ▶ Emergency stop push-button
- ▶ Product sensor

### PERFORMANCES

- ▶ Average cooling/heating rate:  
 $5$  °C/min from  $+150$  °C to  $-60$  °C.

### TESTS: $+150$ °C to $-60$ °C

- ▶ Test performed with an 8 kg load + shelf  
Cooling rate  $> 7$  °C/min



[www.climats-tec.com](http://www.climats-tec.com)

Technopole Bordeaux Montesquieu - 2/4 allée Jacques Latrille - CS50067 - 33650 Martillac-France

Tél : +33(0) 5 56 20 25 25

email : [sales@climats-tec.com](mailto:sales@climats-tec.com)